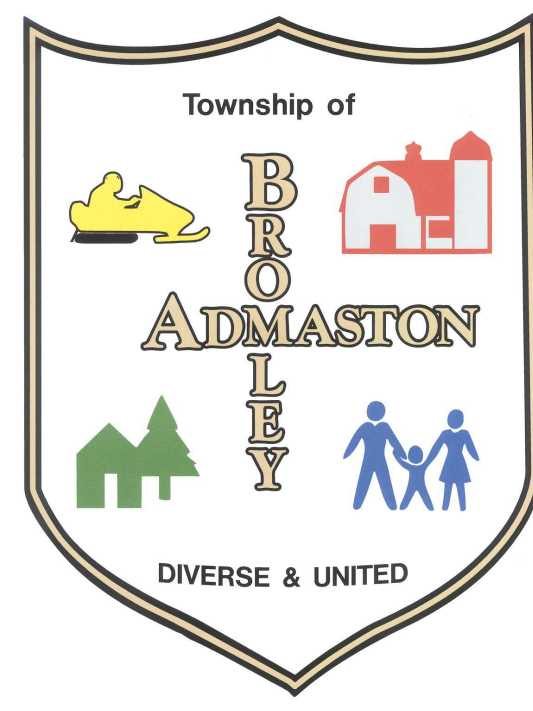


# Admaston/Bromley Zoning By-Law Map

## Schedule "A"

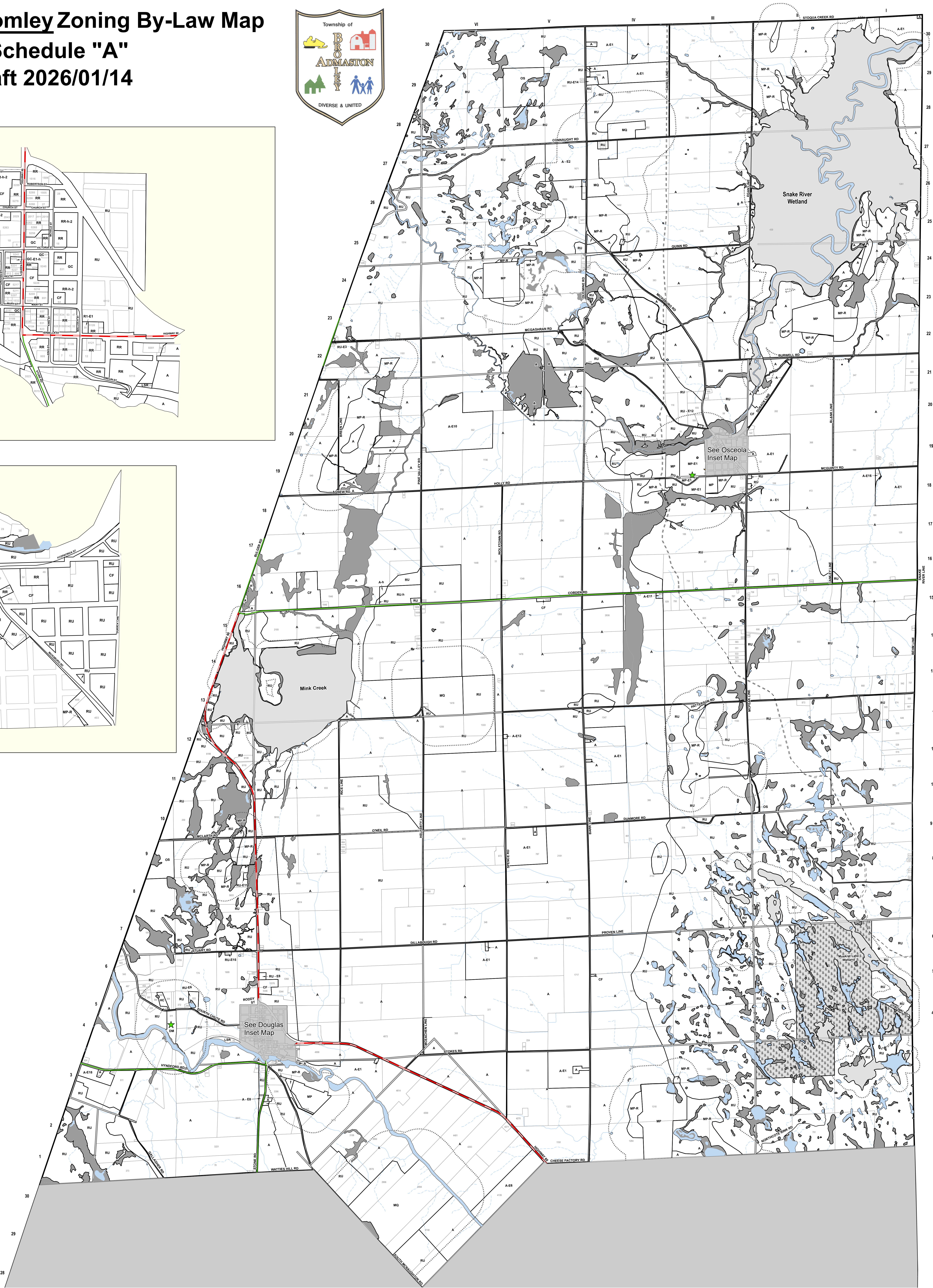
### Draft 2026/01/14



**Inset 1 - Douglas**

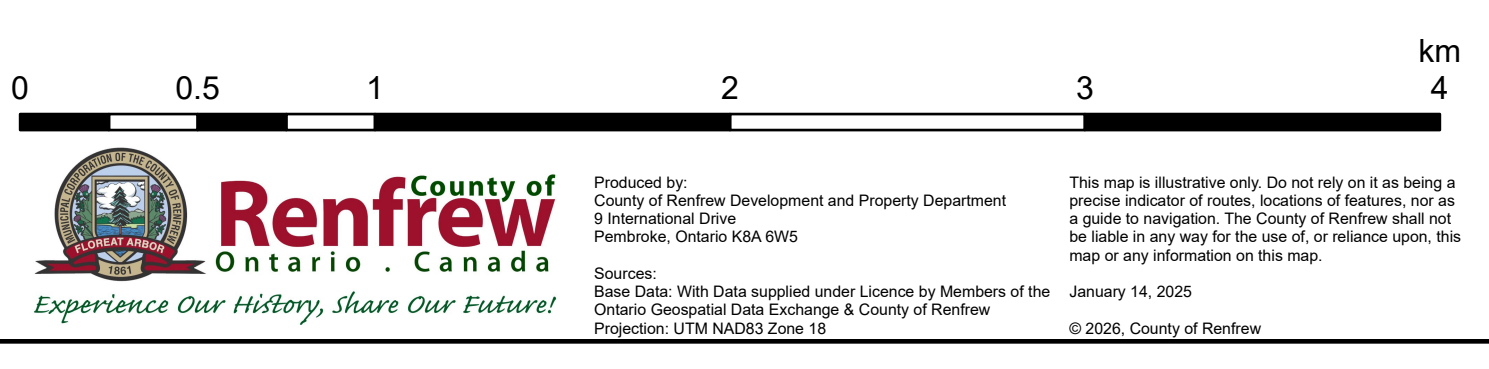


**Inset 2 - Osceola**



Legend	
--- Trans-Canada Pipeline	Permanent Watercourse
--- Trails	★ Waste Disposal Site- Active
--- County Road	★ Waste Disposal Site- Inactive
--- Provincial Highway	Property Parcels
--- Municipal Maintained Road	□ A - Agriculture
--- Municipal Seasonal Maintained Road	□ AI Capacity Lake
--- Private Road	□ CF - Community Facility
--- Crown Road	□ Crown Land
--- Intermittent Watercourse	□ DM - Disposal Industrial
□ EP - Environmental Protection Area	□ EP-E1 - Environmental Protection Exception One
□ EP-E2 - Environmental Protection - Exception Two	□ E - Exceptions
□ GC - General Commercial	□ GM - General Industrial
□ HC - Highway Commercial	□ LSR - Limited Service Residential
□ MP - Mineral Aggregate Pit	□ MP-R - Mineral Aggregate Pit Reserve
□ MQ - Mineral Aggregate Quarry	□ MM-R - Mining Industrial Reserve
□ OS - Open Space	□ RU - Rural
□ RR - Rural Residential	□ TC - Tourist Commercial
□ Water	

Zone	Feature	Required Minimum
DM	Waste Disposal Site	500 metres
EP-E1	Provincially Significant Wetland (PSW)	120 metres
EP-E2	Area of Natural and Scientific Interest - Life Science (ANSI)	120 metres
EP-E3	Area of Natural and Scientific Interest - Earth Science (ANSI)	50 metres
MP and MP-R	Sand and Gravel Resource and Licensed Pit	300 metres
MQ and MQ-R	Bedrock Resource and Quarry	500 metres



Prepared by: County of Renfrew, Development and Property Department  
 Renfrew County, Ontario  
 Date: 2024  
 This map is for informational purposes only. It is not intended to be used as a legal document. The County of Renfrew does not warrant the accuracy or completeness of the information provided on this map.  
 © 2024, County of Renfrew